

Leading Brand of Domestic Digital Mixer

Independent R&D with intellectual property rights

Undertaking OEM at Home and Abroad

Recruitment of provincial and municipal agents

## Cong Ty TNHH VinMall. Co.Ltd

add:off.-14th Floor, HM Town 412-Nguyen Thi Minh Khai, Str Ward No-5,

Dist.3, Ho Chi Minh City, Vietnam Cont

Cell : +84979854157

Whatsapp: +918449461167

E-mail: [Vinmallco.ltd23@gmail.com](mailto:Vinmallco.ltd23@gmail.com)

## Multitrack Stage Craft

add:Khasra No.4618,Vill.Shergarh Laltappar,Near Uttaranchal Dental Conlege,

Dehradun 248140

Cell : +91 8460761603, 8449461167

+91 8126206232

E-mail: [multitrackaudio@gmail.com](mailto:multitrackaudio@gmail.com)

Web: [www.multitrackstagecraft.com](http://www.multitrackstagecraft.com)

As the product is constantly upgraded and improved, the parameters may be slightly changed, and the pictures may be slightly different from the real ones. Please take the real ones as the standard.



## MT Digital Mixer

Self-developed professional DSP digital mixer

# MULTI TRACK STAGE CRAFT

Customer First Quality First

Compliance, trustworthiness, cooperation  
and win-win situation

2024-2025



The company has a solid and strong team of technical personnel, to carry out the purpose of customer first, quality first, create and add quality products, abide by the contract, and win-win cooperation.

#### Product scope of application



Cinema



Gymnasium



Theatrical performances



cultural center



Recording studio



Entertainment place



Cathedral



Conference Room

## Catalog

Extensible Mixer MT DM Series	5-14
Extensible Mixer MT M Series	15-24
Rack type digital mixer	25-26
Digital interface box	27-28
DL16 - Dante converter	29-30
Mini 8-way digital mixer	31-32

MT Digital mixer

Help you realize all your music dreams

# MT-DM16



## Product parameters

- 12 MIC input (independent 48V fantasy power switch), 2 groups of lotus jack stereo input, 1 set of digital input, AES input and output
- MIC input channel (Linked) odd and even
- Shutdown parameters are automatically saved, without worrying about data loss
- 6 DCA marshals and 6 mute marshals
- Built-in signal generator (pink noise/positive wave/white noise)
- Each input is 5-segment parameter EQ adjustable, arbitrary high-low pass filter frequency division
- With sound card /MP3, support U disk playback, recording
- With real-time spectrum RTA function (color editable)
- 10 channels mixing signal output (main output L/R, 2 channels marshalling output, 4 channels AUX output)
- Each output is 12 independent parameters EQ adjustable, arbitrary high-low pass filter frequency division
- Built-in two independent effects, using the French Dream professional effect DSP chip
- Integrated feedback suppressor management
- Chinese and English interface display, PC/iPad/ Android wireless remote control
- 15 100mm, high-precision electric push
- Linux operating system, non-Android system, no crash and no virus interference
- 7 inch high-definition resistive touch screen
- 4 quick scene call mode, 100 scene storage, customizable sceneName,, scene seamless switching, no staccations
- TCP/RS232 central control on line control

Product specifications: LWH( 510\*472\*250 mm) Weight( 10.2kg )

## MT DM20-Plus



Support dual machine backup,  
connect to expansion interface box MT EX16-8



### Product parameters

- 16 MIC/ LINE input, 2 sets of 3.5 Lotus stereo input, 1 set of 3.5 stereo headphone input, 2 sets of digital input: sound card, MP3, AES digital input
- I/O IO expansion is realized, and the maximum support is 42 signal input and 26 signal output
- Compatible with DANTE protocol, realize the audio signal through the switch for input/output routing
- 8\*8 multi-channel playback recording function
- 8 DCA marshals, 8 mute marshals
- Built-in signal generator (pink noise/positive wave/white noise) with optional Bluetooth 5.0 lossless digital playback
- Each input is 5-segment parameter EQ adjustable, arbitrary high-low pass filter frequency division
- With sound card /MP3, support U disk /PC end playback, recording
- Odd-even channel stereo modulation function (LINK)
- Input channel independent feedback suppressor function

- Integrated RTA real-time spectrum display function
- 16 mixed signal output (main output L/R, 4 SUB grouping output, 8 Road aux1-8 auxiliary output)
- Each output is 15 sections of parameter EQ adjustable (main output is 31 sections), high and low pass Filter arbitrary frequency division
- Built-in 2-channel independent effector, using French DREAM professional effect DSP chip
- Integrated automatic mixing function
- Chinese and English interface display, PC/iPad/ Android wireless remote control
- 19 100mm, ALPS high-precision electric push
- Linux operating system, non-Android system, no crash and no virus interference
- 10.1 inch 1280\*800 HD capacitive touch screen display
- TCP/RS232 central control on line control

Product : LWH( 515\*495\*220 mm) Weight( 11.5kg )



## MT DM24-Plus



Support dual machine backup,  
connect to expansion interface box MT EX16-8



### Product parameters

- 24 MIC/ LINE input, 2 sets of 3.5 Lotus stereo input, 1 set of 3.5 stereo headphone input, 2 sets of digital input: sound card, MP3, AES digital input
- I/O IO expansion is realized, and the maximum support is 50 signal input and 28 signal output
- Compatible with DANTE protocol, realize the audio signal through the switch for input/output routing
- 8\*8 multi-channel playback recording function
- 8 DCA marshals, 8 mute marshals
- Built-in signal generator (pink noise/positive wave/white noise) with optional Bluetooth 5.0 lossless digital playback
- Each input is 5-segment parameter EQ adjustable, arbitrary high-low pass filter frequency division
- With sound card /MP3, support U disk /PC end playback, recording
- Odd-even channel stereo modulation function (LINK)
- Input channel independent feedback suppressor function

- Integrated RTA real-time spectrum display function
- 16 mixed signal output (main output L/R, 4 SUB grouping output, 10 Road aux1-10 auxiliary output)
- Each output is 15 sections of parameter EQ adjustable (main output is 31 sections), high and low passFilter arbitrary frequency division
- Built-in 4-channel independent effector, using French DREAM professional effect DSP chip
- Integrated automatic mixing function
- Chinese and English interface display, PC/iPad/ Android wireless remote control
- 26 100mm, ALPS high-precision electric push
- Linux operating system, non-Android system, no crash and no virus interference
- 10.1 inch 1280\*800 HD capacitive touch screen display
- RS232 central control on line control

**Product : LWH( 666\*495\*215 mm) Weight( 15.8kg )**

## MT DM32-Plus



Support dual machine backup,  
connect to expansion interface box MT EX16-8



### Product parameters

- 48 input signals, 32 MIC/Line inputs, 2 sets of 3.5 lotus stereo inputs, 1 set of 3.5 stereo headphone inputs, 2 sets of digital inputs: sound card, MP3, AES digital inputs
- Implement IO expansion for input and output, supporting up to 58 signal inputs and 28 signal outputs
- Support network audio expansion board to achieve network audio signal input/output routing
- 8\*8 multi-channel playback recording function
- 8 DCA marshals, 8 mute marshals
- Equipped with a built-in signal generator (pink noise/positive noise/white noise), optional Bluetooth 5.0 lossless digital playback
- Each input has 5 independent EQ adjustable parameters, and the high and low pass filters can be divided into any frequency
- Dual USB ports, supporting sound card/MP3, supporting USB/PC playback and recording
- Parity channel stereo tuning function (LINK) and channel duplication

**Product : LWH( 910\*515\*245mm) Weight( 18.5kg )**

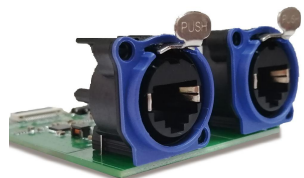
- Integrated RTA real-time spectrum display function
- Input channel independent feedback suppressor function
- 16 mixed signal output (main output L/R, 4 SUB grouping output, 10 Road aux1-10 auxiliary output)
- Each output is 15 sections of parameter EQ adjustable (main output is 31 sections), high and low passFilter arbitrary frequency division
- Built-in 4-channel independent effector, using French DREAM professional effect DSP chip
- Integrated automatic mixing function
- Dual network port, supporting PC/iPad/Android wireless remote control and remote expansion
- 33 100mm, ALPS high-precision electric push
- Linux operating system, non-Android system, no crash and no virus interference
- 10.1 inch 1280\*800 HD capacitive touch screen display
- RS232 central control on line control



## Extendible Digital Mixer



# MT M-Plus



Network extension interface

Supports dual machine backup, dual systems, dual power supplies, and supports connection to interface boxes, And network audio expansion cards. Built in echo cancellation, side chain compression, etc To safeguard your system! 10.1-inch high-definition touch screen for real-time monitoring



## MT M16



### Product parameters

- 12 MIC inputs (independent 48V phantom power switch), 2 sets of lotus socket stereo inputs, 1 set of digital inputs, AES input/output
- Mic input channel (Linked) parity tuning, TFT LCD guided display screen for each channel,
- The channel name and background color can be customized and edited (supporting Chinese).
- 12 independent input channels with feedback suppression function, effectively suppressing whistling
- 6 DCA groups, 6 silent groups
- Equipped with signal generator (pink noise/positive noise/white noise)
- Each input has 5 independent EQ adjustable parameters, with adjustable phase and arbitrary division of high and low pass filters
- Dual USB interfaces, built-in sound card/MP3, supporting USB playback and recording
- Equipped with real-time spectrum RTA function (color editable)

**Product : LWH( 510\*472\*250mm) Weight( 10.5kg )**

10 channels of mixing signal output (main output L/R, 8 channels of AUX output+monitoring output)

Each output has 12 independent EQ adjustable parameters, and high and low pass filters can be used for arbitrary frequency division

Equipped with two independent effectors and a professional effect DSP chip

Integrated automatic mixing function

Chinese and English interface display, supporting wireless remote control of PC/iPad/Android

14 100mm, ALPS high-precision electric pushers

Linux operating system, non Android system, no crashes, no virus interference

7-inch 1024 \* 600 high-definition capacitive touch screen display

4 quick scene call modes, 100 scene storage, customizable scenes Name, supports Chinese input, seamless scene switching, and no interruptions

- Supports TCP/RS232 central control online control



## MT M20-Plus



Supports dual machine backup  
connecting two interface boxes

### Product parameters

- 16 MIC/Line inputs, 2 sets of 3.5 lotus stereo inputs, and 1 set of 3.5 stereo headphone input ports, 2 sets of digital inputs: sound card, MP3, AES digital inputs
- Can connect two 16 in and 8 out stage interface boxes simultaneously, achieving input and output IO expansion, with maximum support 58 signal inputs and 34 signal outputs
- Support audio network transmission, enabling audio signals to be routed through switches for input and output
- 8 \* 8 multi-channel playback and recording function
- 8 DCA groups, 8 silent groups
- Equipped with a built-in signal generator (pink noise/positive noise/white noise), optional Bluetooth 5.0 lossless digital playback
- Each input has 5 independent EQ adjustable parameters, and the high and low pass filters can be divided into any frequency
- Equipped with sound card/MP3, supporting USB/PC playback and recording
- Parity channel stereo tuning function, supporting channel sidechain compression and evasion function
- 16 channel independent feedback suppressor function, effectively suppressing whistling
- Integrated RTA real-time spectrum display function and integrated automatic mixing function
- 14 mixing signal outputs (main output L/R, 12 AUX outputs)
- Each output has 15 independent EQ adjustable parameters (main output 31 segments), with high and low pass Filter arbitrary frequency division
- Equipped with 2 independent effectors and professional DSP chips for effects
- 100 preset mode scenarios available for users to store and call
- Chinese and English interface display, supporting wireless remote control of PC/iPad/Android
- 17 100mm high-precision electric push rods
- Linux operating system, non Android system, no crashes, no virus interference
- 10.1-inch 1280 \* 800 high-definition capacitive touch screen display with panel locking function
- Support TCP/RS232 central control online control, open central control protocol code

**Product : LWH( 515\*503\*255mm) Weight( 11.5kg )**

## MT M24-Plus



Supports dual machine backup  
connecting two interface boxes

### Product parameters

- 24 MIC/Line inputs, 2 sets of 3.5 lotus stereo inputs, and 1 set of 3.5 stereo headphone input ports, 2 sets of digital inputs: sound card, MP3, AES digital inputs
- Can connect two 16 in and 8 out stage interface boxes simultaneously, achieving input and output IO expansion, with maximum support 66 signal inputs and 36 signal outputs
- Support network audio protocols, enabling audio signals to be routed through switches for input and output signals
- 8 \* 8 multi-channel playback and recording function
- 13 DCA groups, 13 silent groups
- Equipped with a built-in signal generator (pink noise/positive noise/white noise), optional Bluetooth 5.0 lossless digital playback
- Each input has 5 independent EQ adjustable parameters, and the high and low pass filters can be divided into any frequency
- Dual USB interfaces, built-in sound card/MP3, supporting USB/PC playback and recording
- Parity channel stereo tuning function. Support channel side chain compression and evasion function
- 24 input channels with independent feedback suppressor function, effectively suppressing whistling

- Integrated RTA real-time spectrum display function and integrated automatic mixing function
- 20 mixing signal outputs (LR, 14 AUX), supporting AES output
- Each output has 15 independent EQ adjustable parameters (main output 31 segments), with high and low pass Filter arbitrary frequency division
- Equipped with 4 independent effectors and professional DSP chips for effects
- 100 preset mode scenarios available for users to store and call
- Chinese and English interface display, supporting wireless remote control of PC/iPad/Android
- 26 100mm high-precision electric push rods
- Linux operating system, non Android system, no crashes, no virus interference
- 10.1-inch 1280 \* 800 high-definition capacitive touch screen display with panel locking function
- Support TCP/RS232 central control online control, open central control protocol code

**Product : LWH( 746\*509\*248mm) Weight( 17kg )**

## MT M32-Plus



Supports dual machine backup  
connecting two interface boxes



### Product parameters

- 32 MIC/Line inputs, 2 sets of 3.5 lotus stereo inputs, and 1 set of 3.5 stereo headphone input ports, 2 sets of digital inputs: sound card, MP3, AES digital inputs
- Can connect two 16 in and 8 out stage interface boxes simultaneously, achieving input and output IO expansion, with maximum support 76 signal inputs and 36 signal outputs
- Support network audio protocols, enabling audio signals to be routed through switches for input and output signals
- 8 \* 8 multi-channel playback and recording function
- 16DCA groups, 16 silent groups
- Equipped with a built-in signal generator (pink noise/positive noise/white noise), optional Bluetooth 5.0 lossless digital playback
- Each input has 5 independent EQ adjustable parameters, and the high and low pass filters can be divided into any frequency
- Dual USB interfaces, built-in sound card/MP3, supporting USB/PC playback and recording
- Parity channel stereo tuning function. Support channel side chain compression and evasion function
- 32 input channels with independent feedback suppressor function, effectively suppressing whistling
- Integrated RTA real-time spectrum display function and integrated automatic mixing function
- 20 mixing signal outputs (LR, 14 AUX), supporting AES output
- Each output has 15 independent EQ adjustable parameters (main output 31 segments), with high and low pass Filter arbitrary frequency division
- Equipped with 4 independent effectors and professional DSP chips for effects
- 100 preset mode scenarios available for users to store and call
- Chinese and English interface display, supporting wireless remote control of PC/iPad/Android
- 33100mm high-precision electric push rods
- Linux operating system, non Android system, no crashes, no virus interference
- 10.1-inch 1280 \* 800 high-definition capacitive touch screen display with panel locking function
- Support TCP/RS232 central control online control, open central control protocol code

**Product : LWH( 1040\*630\*360mm) Weight( 20kg )**





## MT EX16-8



### Product parameters

- 16 Channels MIC input 1 stereo inputs
- 1 Group Digital input: fiber / sound card, MP3
- Input channel pan adjustment
- MIC input gain adjustment (digital gain)
- +48V phantom power (MIC channels can be turned on and off independently)
- Built-in noise gate, Compressor, high and low pass, input 5 Bands equalization, delay, channel harmony adjustment
- Channel parameter fast copy function, Feedback Exterminator.
- Support input channels odd-even Joint adjustment
- Input and output EQ ON/OFF
- Each channel has a multi-function menu, mute and monitor
- 10-channel signal output (main output L, R, 4-channel AUX output, 4 Channels Group output)
- AUX output (before/after fader)

- Output processing: high and low pass filtering, 11-band parametric equalization, compressor, delay, phase
- Digital recording function
- Built-in sound card (MP3, PC directly play music)
- 4 quick scene recall modes, 20 modes storage
- User parameter storage and recall (can be managed on the pc side)
- Built-in two-channel dual DSP effects
- FX foot switch interface
- Multi-OS operating system (IOS system, Android system, WINDOWS system)
- Support wired network port adjustment (or external router wireless adjustment)
- 4.3 inch 480\*272 capacitive touch display

## MT DU20



### Product parameters

- 16 MIC input (independent 48V phantom power switch), 2 sets of 3.5 Lotus stereo input, 1 set of digital input: sound card, MP3, AES stereo input
- Each input is 5-segment parameter EQ adjustable, arbitrary high-low pass filter frequency division
- With sound card /MP3, support U disk playback, recording
- Two power amplifier output (2\*800W 8 Ohm), 8 SUB grouping output, 1 set of stereo Headphone monitoring output, 1 set of stereo AES output
- Each output is independent of 11 parameters EQ adjustable, arbitrary high-low pass filter frequency division

- Built-in 2-way independent effector + integrated feedback function
- RS232 central control on line control
- Automixer function
- Chinese and English interface display, support PC/Android/iPad wired wireless remote control
- Linux operating system, non-Android system, no crash and no virus interference
- 7 inch 1024\*600 HD touch screen
- 4 quick scene invocation modes, 100 scene storage output

**Widely used for the installation of fixed cabinets in conference rooms, schools, lecture halls, and other places!**







### MT SD16



#### Product parameters

- 16 channels with high-quality speaker amplifier input channels, supporting 48V phantom power supply
- 8 analog balanced XLR output channels
- Network transmission with ultra-low latency
- The transmission distance of CAT6 cable can reach 80m
- Dual expansion ports, no need for extenders or routers
- It can be remotely controlled to start up through a digital station

- The whole machine is composed of high-quality components
- Durable and sturdy structure ensures long-lasting service life

### 16 channel digital interface box, paired with M-Plus series digital mixing console



### 32 channel digital interface box, paired with M-Plus series digital mixing console

### MT SD32



#### Product parameters

- 32 channels with high-quality speaker amplifier input channels, supporting 48V phantom power supply
- 16 analog balanced XLR output channels
- Network transmission with ultra-low latency
- The transmission distance of CAT6 cable can reach 80m
- Dual expansion ports, no need for extenders or routers
- It can be remotely controlled to start up through a digital station

- The whole machine is composed of high-quality components
- Durable and sturdy structure ensures long-lasting service life



The 1U size converter features 16 channels analog line input/output. Compatible with protocol. Support for building highly stable and flexible systems.

The DL16 can transmit 16 analog line input/output signals, and the DL16 can convert up to 16 analog line input and output signals .

## MT DL16

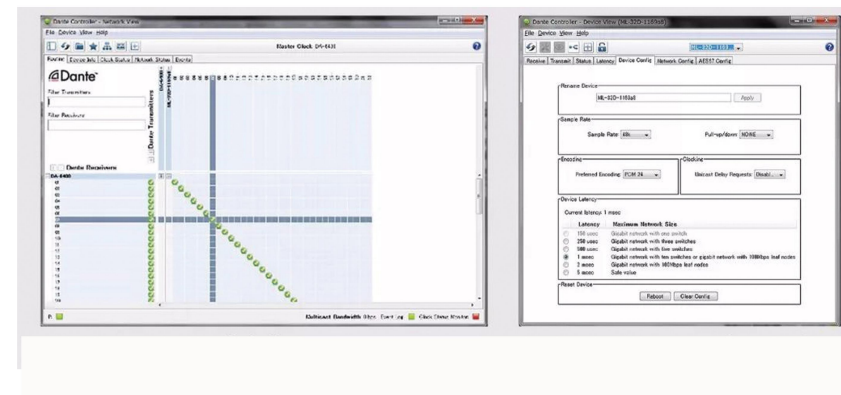
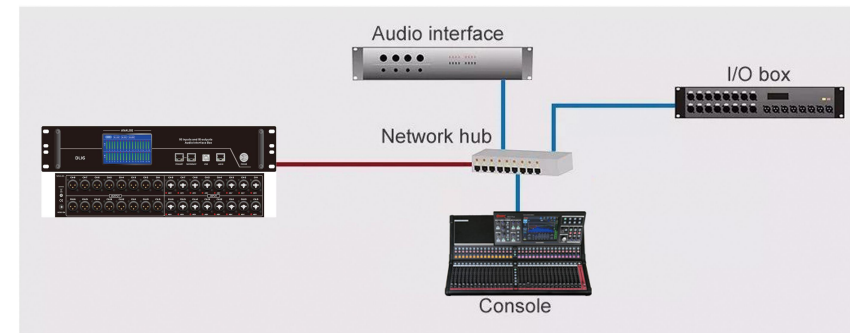


支持ipad远程操作  
Support for iPad  
remote operation

### Product parameters

- Converter has 16 channels analog line input/output and is compatible with the protocol.Support for building highly stable and flexible systems
- Each analog input supports an independent 48V phantom power supply control
- Each input supports independent feedback suppression
- 4.3" TFT color display, real-time display output status
- One active and one standby dual network port connection can be used to construct multiple redundant systems with dual networks

- Output The output is independent of 7-segment parameter EQ adjustment
- Support USB and network connection PC debugging
- PC Controller enables flexible routing configurations
- Each input and output is equipped with 16 phoenix ports for convenient connection to other wiring equipment
- 2.5U rack mounting dimensions



### Product characteristics

- Developed based on Linux operating system, virus free, running more securely and stably
- 4 MIC/Line inputs, 2 RCA lotus stereo inputs, 2 independent sound card digital inputs, and 1 word digital (MP3, Bluetooth) input
- Supports +48V phantom power supply (MIC channels can be independently turned on and off)
- Input built-in noise gate, voltage limiter, high and low pass, 4-stage parameter equalization, delay, phase, and output channel sound and image balance adjustment
- MIC/Line input supports independent feedback suppression function, effectively suppressing howling
- MIC/Line input with microphone priority function setting
- 6 outputs (L/R stereo main output, AUX1, AUX2 two mono auxiliary outputs, two stereo headphone outputs)
- Output built-in 15 parameter EQ equalization, voltage limiter, high and low pass filters, delay, phase
- Built in two independent effector units (various karaoke effects and instrument effects)
- Built in 5.0 dual-mode digital Bluetooth, supporting Bluetooth for music playback and app debugging
- Support playback of recordings on USB drives
- Two independent TYPE-C sound card live streaming interfaces, which can directly connect to the phone for live streaming, and also have charging settings for the phone
- Built in multiple special effects sounds, one click playback, and support for customization
- Four quick scene call modes on the panel, one click loading
- 20 scene modes for users to store and retrieve
- Supports infrared remote control with one click control
- Supports TCP protocol central control
- Multi operating system control software, mobile app, computer debugging
- Support 100M wired network port adjustment (or external router wireless adjustment)
- Supports 12V DC power supply, 10000mA, with a working time greater than 5 hours
- Support panel locking function to prevent accidental operation
- 5-inch 800 \* 480 high-definition capacitive touch display screen



MT-DM8



MT-DM8S



MT-M8



Built-in Bluetooth receiver

8 input digital mixer with Bluetooth audio and application control, 60mm channel fader, 2 FX processors and USB/audio interface.  
 All monitors and master buses have 9-band equalizers and limiters to prevent unexpected volume spikes on the speakers. .  
 Bluetooth remote control can be carried out by mobile phone or tablet via APP

